



Lake Effects

Quilt 1

by Denise Russell



Quilt size: 50" x 70"

Skill Level: Intermediate

Blank Quilting Corporation

49 West 37th Street ♦ New York, NY 10018

Tel: 800-294-9495 ♦ Fax: 212-679-4578

www.blankquilting.net

facebook

Free Project

NOT FOR RESALE

Lake Effects ~ Fabrics in the Collection



9807-99 Blocks - Black



9816-60 Animals on Plaid - Lt. Green



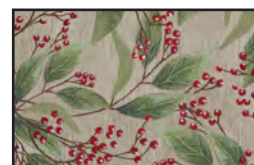
9808-39 Deer - Brown



9806-66 Lake Scene
Green



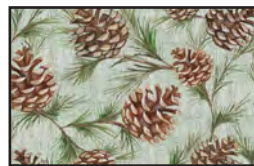
9809-39 Tree Bark
Brown



9810-39 Berries
Brown



9811-70 Dragonflies
Blue



9812-60 Pine Cones
Lt. Green



9813-41 Cattails
Tan



9814-41 Acorns
Tan



9815-41 Owls
Tan



9817-41 Animals with
Words - Tan

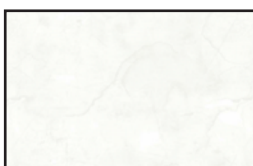


9818-66 Wood Texture
Green



9818-70 Wood Texture
Blue

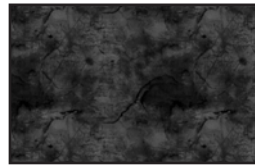
Selected fabric from Urban Legend by Tana Mueller



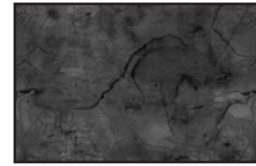
7101-01 White



7101-32 Lt. Brown



7101-98 Black



7101-99 Charcoal

Lake Effects - Quilt 1

Page 1

Materials

Yardages and cutting instructions are based on 42" of usable fabric width.

1/4 yard 7101-01 Urban Legend-White
1/3 yard 7101-32 Urban Legend-Lt. Brown
1/3 yard 9818-70 Wood Texture-Blue
3/8 yard 7071-99 Urban Legend-Charcoal
3/8 yard 9809-39 Tree Bark-Brown
3/8 yard 9814-41 Acorns-Tan
1/2 yard 9818-66 Wood Texture-Green
5/8 yard 9813-41 Cattails-Tan
2/3 yard 9807-99 Blocks-Black
7/8 yard 7101-98 Urban Legend-Black 7/8 yard
9811-70 Dragonflies-Blue
1 yard 9817-41 Animals with Words-Tan
3-1/2 yards 9808-39 Deer-Brown for backing
58" x 78" piece of batting
Tracing paper

Cut Fabrics

***Note:** All strips are cut across the width of the fabric (WOF) from selvage to selvage unless otherwise noted. If cut across the length of the fabric (LOF), the **LOF** notation will be indicated.*

From 7101-01 Urban Legend-White:

*Cut one 3-1/2" x WOF strip. Sub-cut sixteen 2-1/2" x 3-1/2" rectangles (Star - C1, D1, E1, F1).

From 7101-32 Urban Legend-Lt. Brown:

*Cut four 1-3/4" x WOF strips. Sub-cut 112 1-1/2" x 1-3/4" strips (Trees - B1, B3, B4, B6).
*Cut one 2-1/4" x WOF strip. Sub-cut sixteen 2-1/4" squares (Star - C4, C5, D4, D5).

From 9818-70 Wood Texture-Blue:

*Cut one 2" x WOF strip. Sub-cut four 2" x 9-1/2" sashing strips.
*Cut four 1-3/4" x WOF strips. Sub-cut twenty-eight 1-3/4" x 6" rectangles (Trees - A6).

From 7071-99 Urban Legend-Charcoal:

*Cut one 1-3/4" x WOF strip. Sub-cut twenty-eight 1-1/2" x 1-3/4" strips (Trees - B2).
*Cut five 2" x WOF strips for border 5.

From 9809-39 Tree Bark-Brown:

*Cut one 1-3/4" x WOF strip. Sub-cut twenty-eight 1-1/2" x 1-3/4" strips (Trees - B5).
*Cut five 2" x WOF strips for border 4.

From 9814-41 Acorns-Tan:

*Cut one 2" x WOF strip. Sub-cut sixteen 2" squares (Star - A2, A4, B2, B4).
*Cut two 4-1/2" x WOF strips. Sub-cut twenty-eight 3" x 4-1/2" rectangles (Trees - A1).

From 9818-66 Wood Texture-Green:

*Cut one 2" x WOF strip. Sub-cut eight 2" squares (Star - A1, B1).
*Cut one 2-3/4" x WOF strip. Sub-cut eight 1-1/2" x 2-3/4" strips (Star - A3, B3).
*Cut two 4-1/2" x WOF strips. Sub-cut twenty-eight 3" x 4-1/2" rectangles (Trees - A4).

From 9813-41 Cattails-Tan:

*Cut two 1-1/2" x WOF strips for border 2 (top and bottom only).
*Cut four 1-3/4" x WOF strips for border 1.
*Cut two 2" x WOF strips. Sub-cut six 2" x 11-1/2" sashing strips.

From 9807-99 Blocks-Black:

*Fussy-cut eight 9-1/2" x 11" blocks.

From 7101-98 Urban Legend-Black:

*Cut one 2" x WOF strip. Sub-cut three 2" squares (cornerstones).
*Cut two 2-3/4" x WOF strips. Sub-cut thirty-two 2-3/4" squares (Star - C2, C3, D2, D3, E2, E3, F2, F3).
*Cut seven 2-1/2" x WOF strips for binding.

From 9811-70 Dragonflies-Blue:

*Cut four 4-1/2" x WOF strips. Sub-cut:
- Fifty-six 2-1/4" x 4-1/4" strips (Trees - A2, A5); and
- Twenty-eight 3" x 4-1/2" rectangles (Trees - A3).

From 9817-41 Animals with Words-Tan:

*Cut six 5" x WOF strips for border 6.

Lake Effects - Quilt 1

Page 2

Assemble Blocks

Note: Measurements include 1/4" seam allowances. Sew with right sides together unless otherwise stated. If no direction is specified, press seams toward darker fabric.

1. Trace the trees and star foundation templates onto the tracing paper including the numbers. Stack ten tracing sheets under the tree you just traced and staple the stack once or twice. Using the sewing machine with an old, small gauge needle and no thread (even in the bobbin), set the stitch length to 10-12 stitches per inch and carefully sew on the lines (except the outside edges). [Alternatively, hand trace each template]. Repeat to make a total of 28 tree blocks and 4 star blocks. Copy numbers onto each one.

2. Use the pieces mentioned on Tables 1 and 2 and the foundation paper templates of each type to complete twenty-eight 5-1/2" tree blocks and four 5-1/2" star blocks (*figure 1*, next page).

Tree Blocks – Make 28		
Fabric	Location	(Quantity) Size of fabric pieces
9814-41 Acorns-Tan	A1	(28) 3" x 4-1/2" rectangles
9818-66 Wood Texture-Green	A4	(28) 3" x 4-1/2" rectangles
9811-70 Dragonflies-Blue	A3 A2, A5	(28) 3" x 4-1/2" rectangles (56) 2-1/4" x 4-1/2" strips
9818-70 Wood Texture-Blue	A6	(28) 1-3/4" x 6" strips
7101-32 Urban Legend-Lt. Brown	B1, B3, B4, B6	(112) 1-1/2" x 1-3/4" strips
7071-99 Urban Legend-Charcoal	B2	(28) 1-1/2" x 1-3/4" strips
9809-39 Tree Bark-Brown	B5	(28) 1-1/2" x 1-3/4" strips

Table 1 – Foundation piecing sections and fabrics for tree blocks.

Star Blocks – Make 4		
Fabric	Location	(Quantity) Size of fabric pieces
9818-66 Wood Texture-Green	A1, B1 A3, B3	(8) 2" x 2" squares (8) 1-1/2" x 2-3/4" strips
9814-41 Acorns-Tan	A2, A4, B2, B4	(16) 2" x 2" squares
7101-01 Urban Legend-White	C1, D1, E1, F1	(16) 2-1/2" x 3-1/2" rectangles
7101-98 Urban Legend-Black	C2, C3, D2, D3, E2, E3, F2, F3	(32) 1-1/2" x 2-3/4" strips
7101-32 Urban Legend-Lt. Brown	C4, C5, D4, D5	(16) 2-1/4" x 2-1/4" squares

Table 2 – Foundation piecing sections and fabrics for star blocks.

Lake Effects - Quilt 1

Page 3



Trees – Make 28.



Stars – Make 4.
Figure 1

Assemble Quilt Top

3. Referring to the quilt photo for block placement, lay out the blocks and the 2" x 9-1/2" 9818-70 Wood Texture-Blue sashing strips in four rows, and join the blocks and sashing strips together in each row. Press the seams toward the blocks.
4. To make the horizontal sashing rows, alternatively sew together two 2-1/2" x 11-1/2" 9813-41 Cattails-Tan sashing strips and one 2" cornerstone squares. Repeat to make a total of three sashing strips. Press the seams toward the cornerstones.
5. Matching adjacent seams, sew block rows and horizontal sashing strips together. Press seams in one direction.
6. For border 1, sew together the four 1-3/4" 9813-41 Cattails-Tan strips end to end using diagonal seams. Measure the vertical length of the quilt top through the center and cut two border strips that length. Sew one strip to each side of the quilt top. Measure the width of the quilt top through the center. Cut two border strips that length and sew one to the top and one to the bottom. Press the seams toward the borders.

7. For border 2, sew one 1-1/2" 9813-41 Cattails-Tan strip to the top and one to the bottom of the quilt center and trim the extra length. Press the seams toward borders. Quilt measures 25-1/2" x 45-1/2" up to here.

8. For border 3 and referring to the quilt photo and diagram for block placement, arrange nine tree blocks for each side of the quilt. Sew blocks together and sew one border strip to each side of the quilt center. Press the seam toward quilt center.

9. Repeat step 8 with the four star corner blocks and the remainder blocks and sew one border strip to the top and one to the bottom of the quilt center.

10. Repeat step 6 with the five 2" 9809-39 Tree Bark-Brown strips to make and add border 4. Remove paper from the blocks. -

11. Repeat step 6 with the five 2" 7071-99 Urban Legend-Charcoal strips to make and add border 5.

12. Repeat step 6 with the six 5" 9817-41 Animals with Words-Tan strips to make and add border 6.

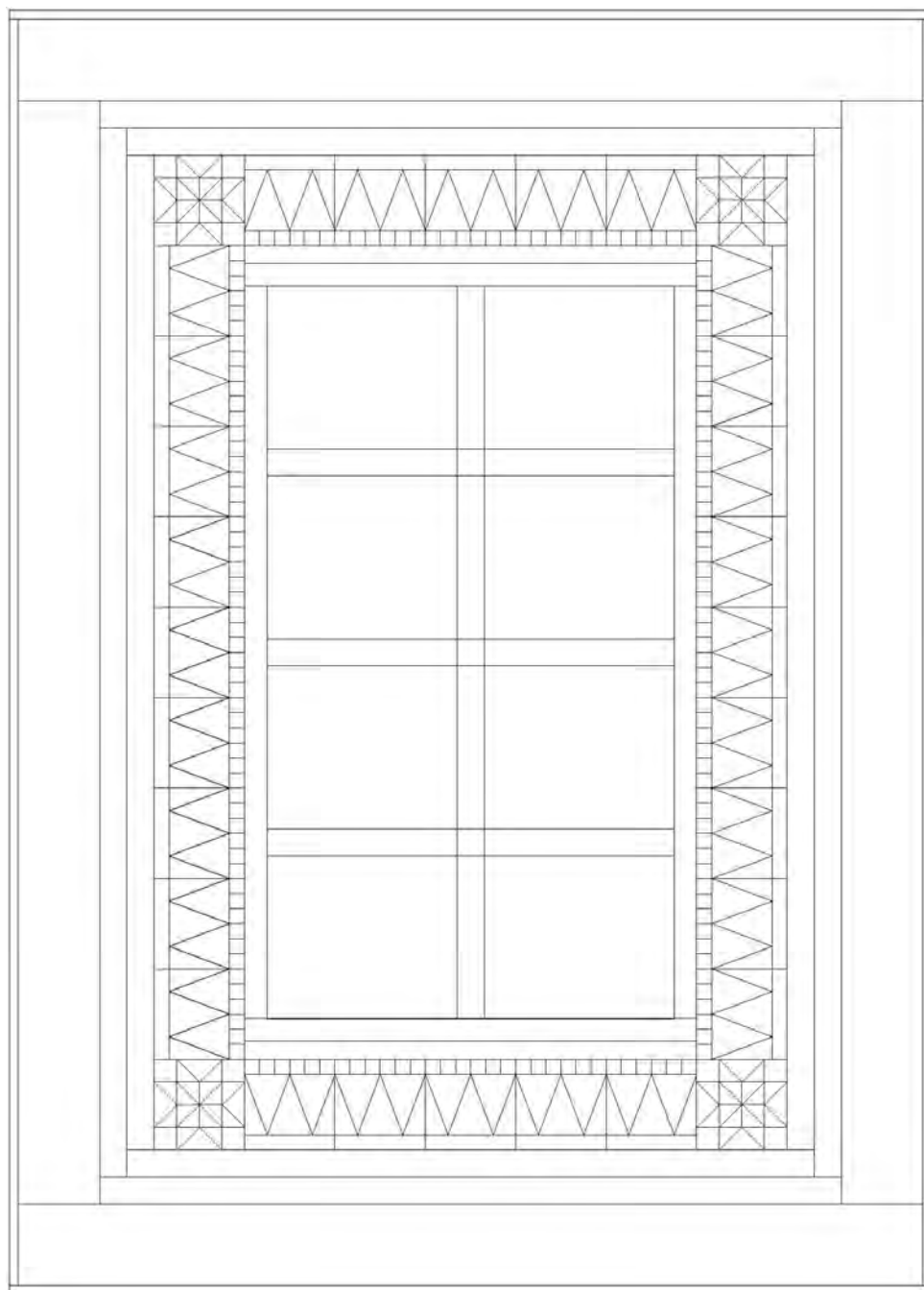
Finishing

13. Create a quilt sandwich with the batting between the quilt top and the backing. Pin or baste layers together, mark quilting design, and quilt by hand or machine. When quilting is complete, remove pins or basting, and trim batting and backing even with raw edges of the quilt top.

14. Join the seven 2-1/2" 7101-98 Urban Legend-Black binding strips together end to end using a diagonal seam to make one long strip. Fold in half lengthwise and press. Sew binding to the edges of the quilt top, mitering corners, and overlapping ends. Fold binding to the back of the quilt and stitch it in place by hand to finish.

Lake Effects - Quilt 1

Page 4



Quilt Diagram

©2019 Blank Quilting Corporation

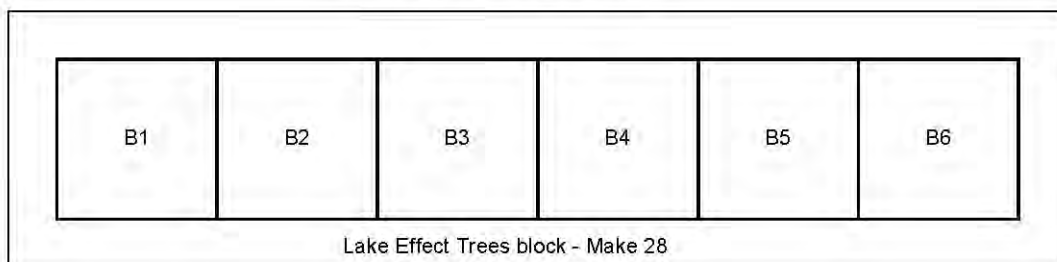
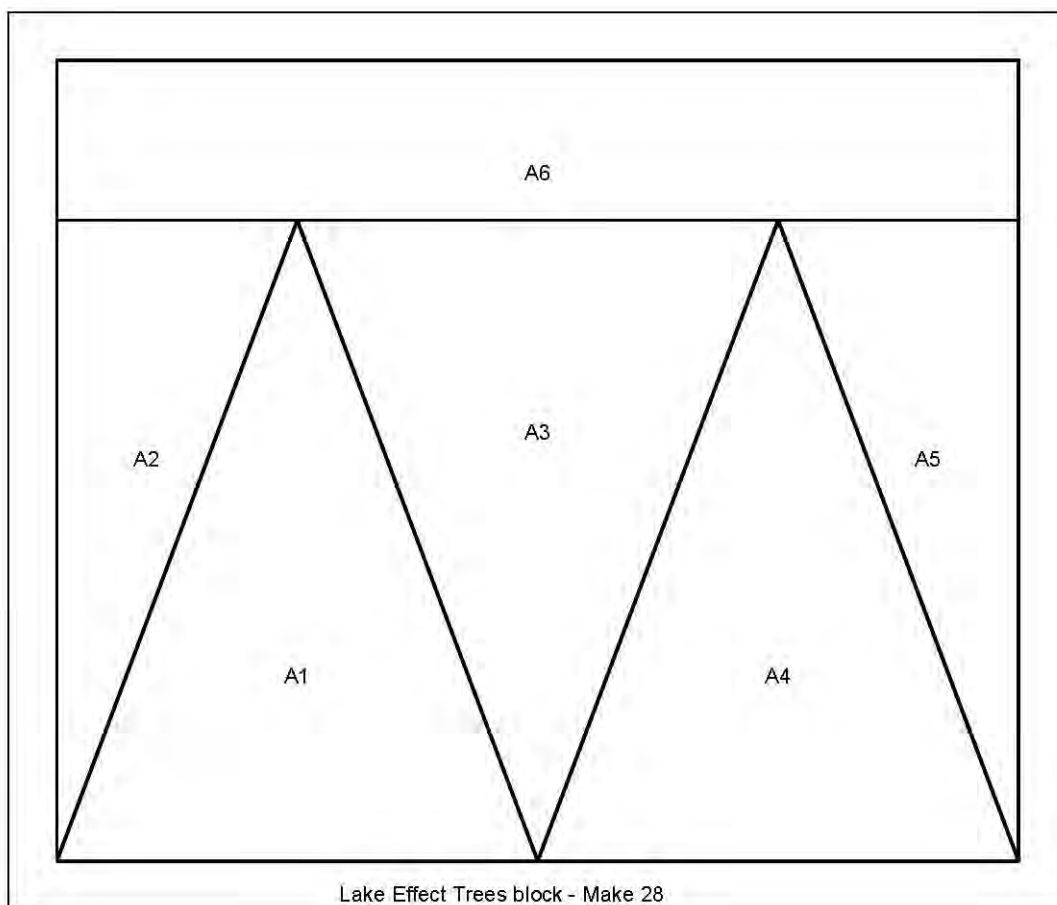
Every effort has been made to ensure that all projects are error free. All the information is presented in good faith; however, no warranty can be given nor results guaranteed as we have no control over the execution of instructions. Therefore, we assume no responsibility for the use of this information or damages that may occur as a result. When errors are brought to our attention, we make every effort to correct and post a revision as soon as possible. Please make sure to check www.blankquilting.net for pattern updates prior to starting the project. We also recommend that you test the project prior to cutting for kits. Finally, all free projects are intended to remain free to you and are not for resale.

Lake Effects - Quilt 1

Page 5

Foundation Templates

1" square



Lake Effects - Quilt 1

Page 6

Foundation Templates

